

Silum

Acoustic lamp



www.noverb-design.com

General

Dimension: 37 x 180 cm

Weight: 9 kg

Input voltage: 120-230v

Input frequency: 50/60 Hz

Wattage: max. 40 watt for each lamp holder

Cable: 2 mt white fabric cable*

Materials: Acoustic Foam UL94-HF1, birch plywood phenolic with transparent finish**

Fixing system:

Light point: 3 x E14 plastic lamp holder

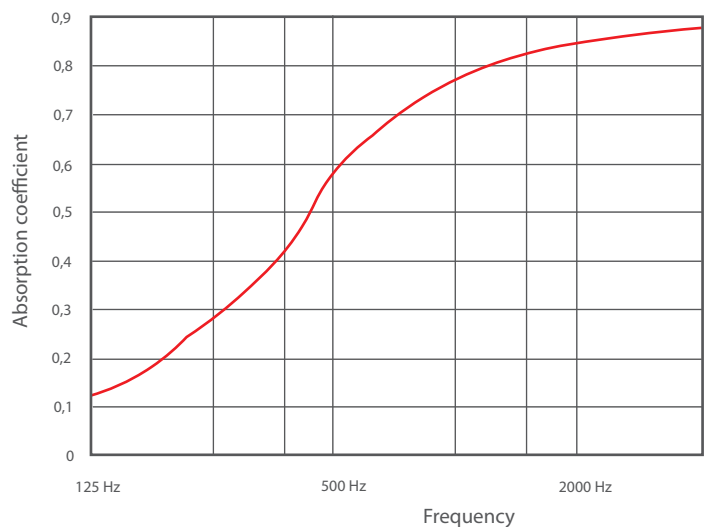
Certifications:  listed |  PATENTED product

* Different colors and lengths on request.

** Different finishes on request.

Acoustics

The graph refers to the absorption of a single lamp in an environment of 2 square meters.



Sound absorbing material

Material: PU Polyether T25 AUX, painted with low Cov content water paint.

Amount: 1,4 mq

Number of slats: 12, tickness 4 cm

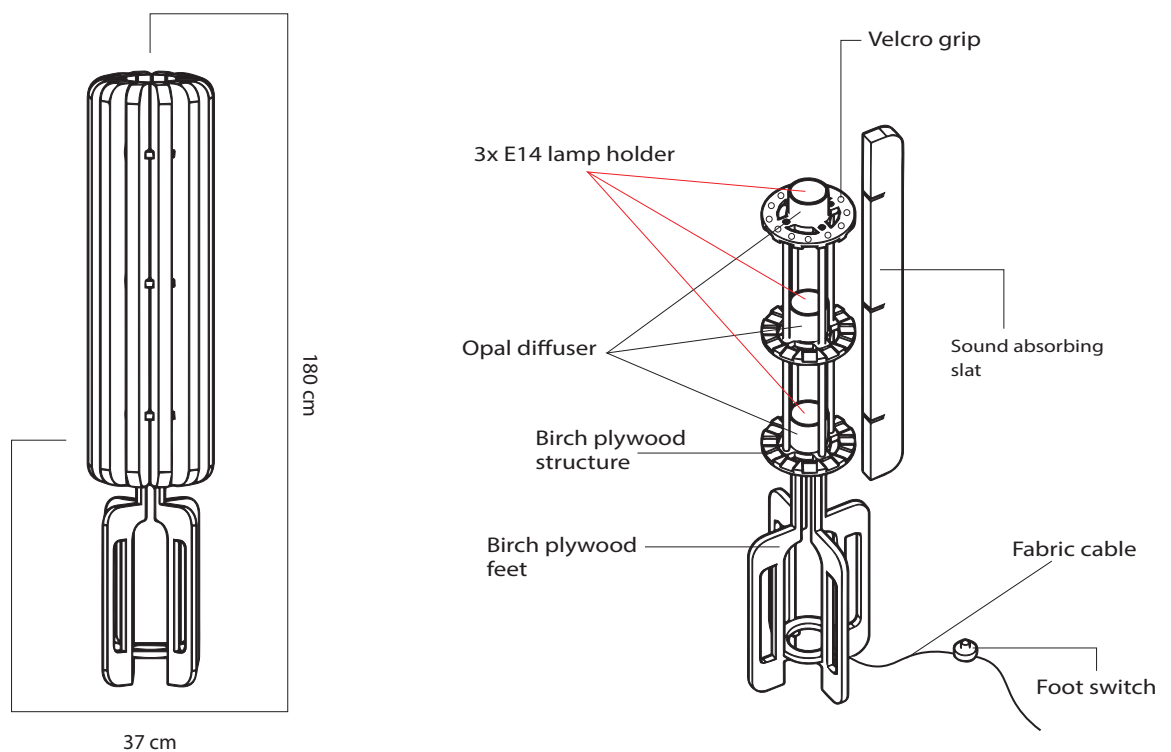
Slats hooking: Velcro grip

Density: ISO 845 25 Kg/m³

Flame test according to standard: UL94-HF1

Temperature Range: -20°C / +110°C

Configuration

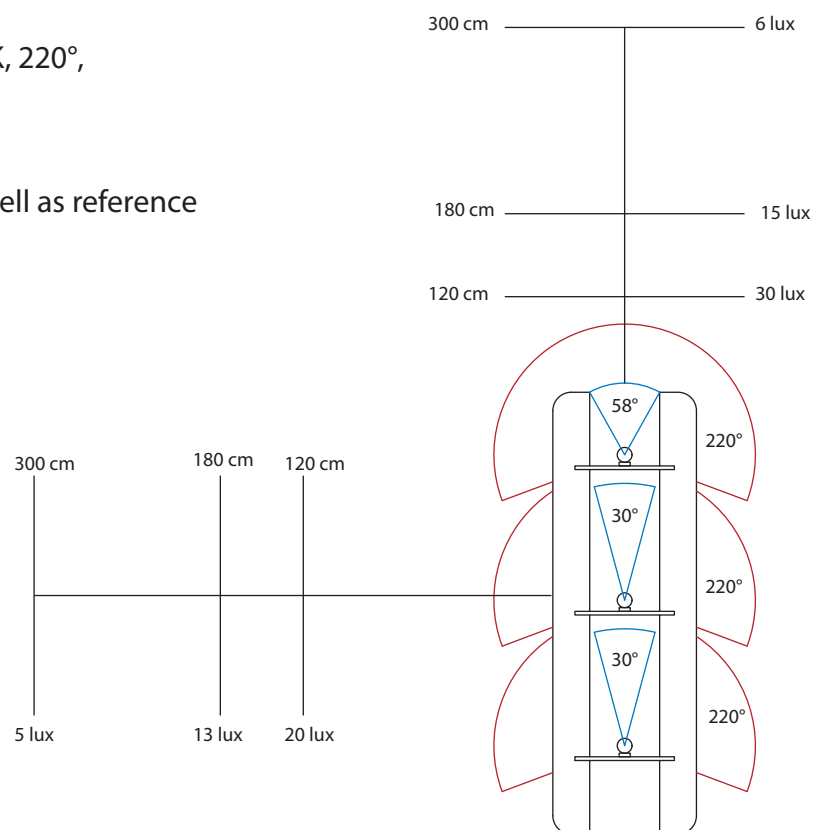


Photometric data

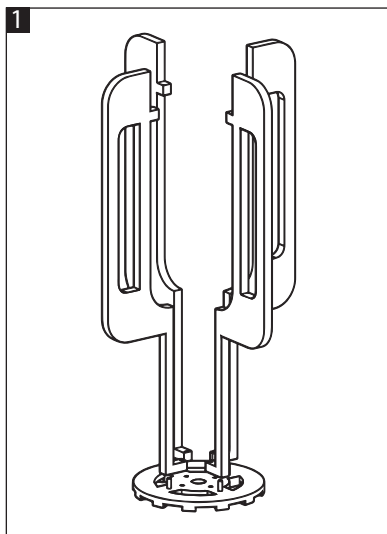
Led bulb reference: 7 W, 3000K, 220°, 700 lumen

Direct light angle: 58°, 30°, 30°

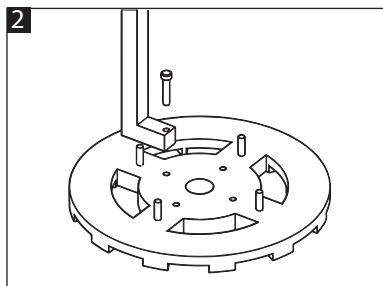
Diffused light angle: 220° as well as reference led bulb (through the slats).



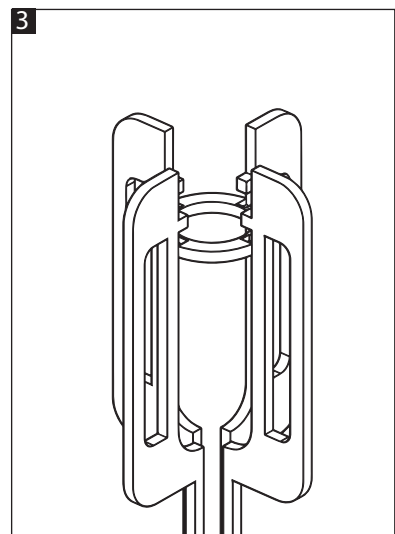
Assembly instructions



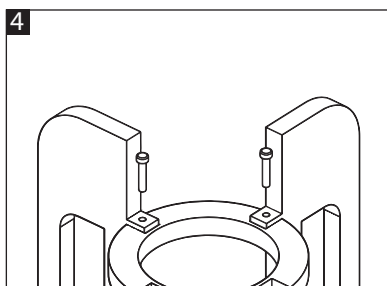
Position the 4 feet by doing match the holes with the pins of positioning.



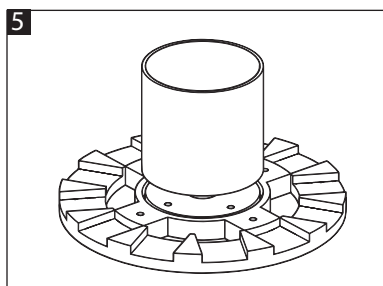
Fix the feet to the structure with the screws "A".



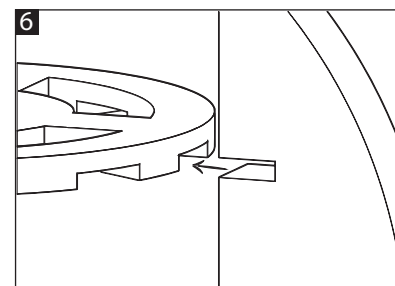
Bring the crown to the base of the feet making the joints coincide.



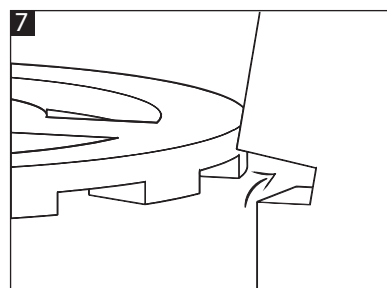
Fix the crown to the feet with the screw "B".



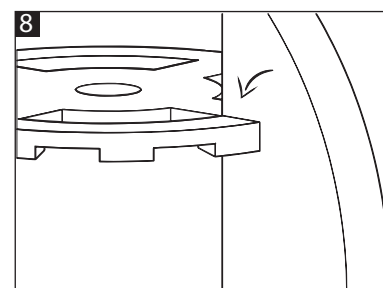
Place the 3 opalines in the appropriate speakers grooves.



Bring the slat closer to the structure making the joints coincide.



Slightly raise the tips of the slat to facilitate insertion.



Release the tips of the slat and make it stick to the velcro.

Foam colors

Dark green



Light green



Green water



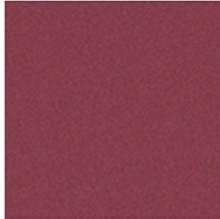
Blue



Red brick



Ocher



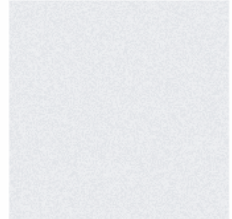
Bordeaux



Anthracite



Grey



Off white

*Different colors on request.